





Abode are pleased to offer for sale this well-presented three-bedroom terraced home, providing spacious living accommodation in a popular and convenient location.

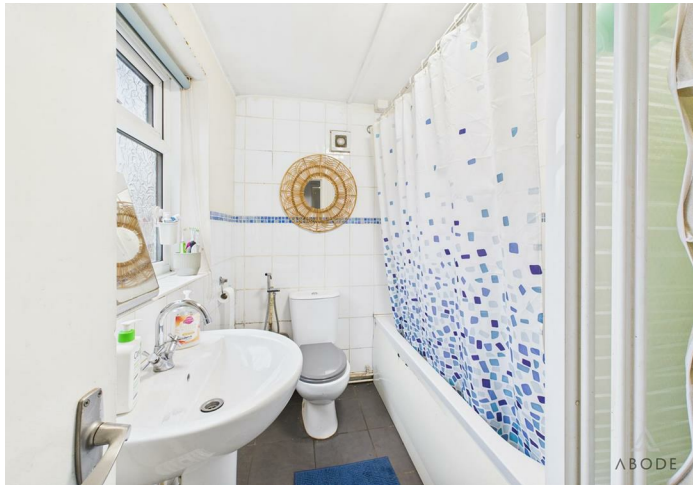
The property benefits from uPVC double glazing and gas central heating throughout, and is ideally positioned with easy access to a range of local amenities, making it a practical and comfortable home.

In brief, the accommodation comprises a living room, dining room, kitchen, and bathroom to the ground floor. To the first floor are three well-proportioned bedrooms. Externally, the property enjoys a generously sized rear garden, ideal for outdoor entertaining or family use.

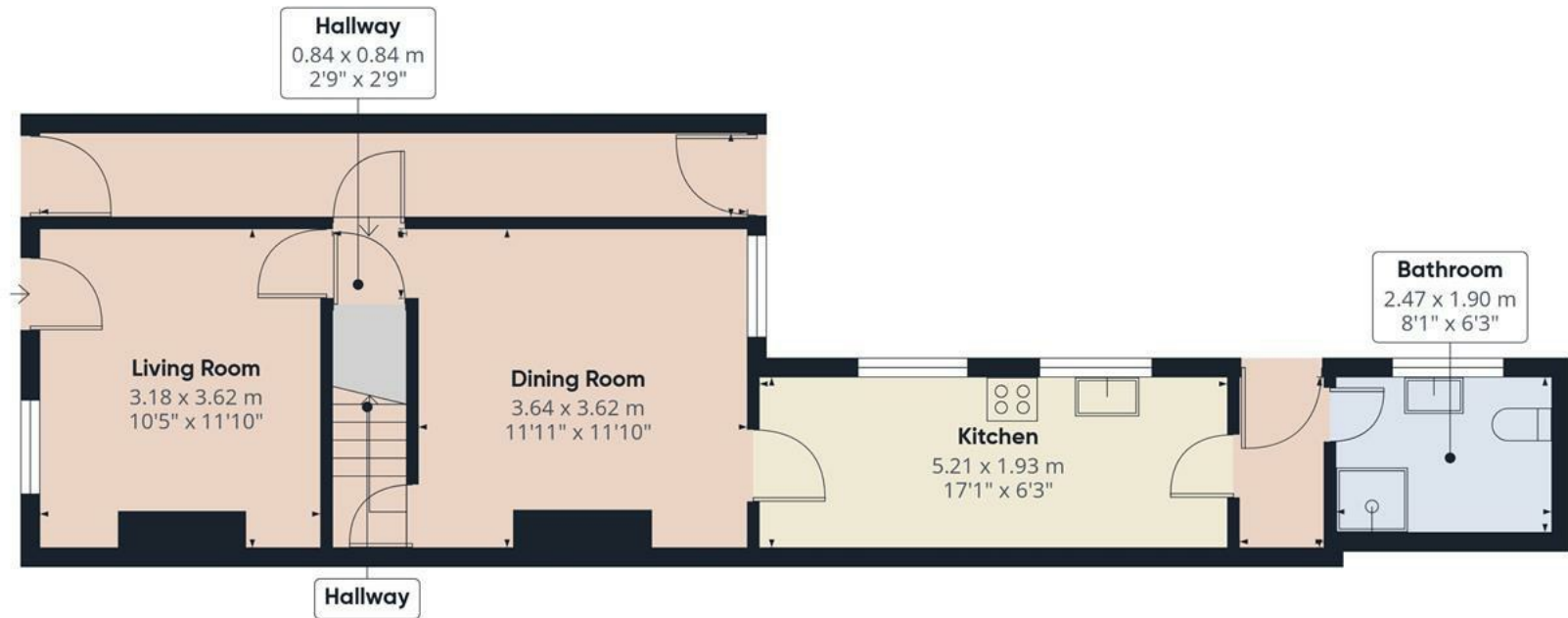
This home would be perfectly suited to first-time buyers and investors alike, and an early viewing is highly recommended to appreciate the space and location on offer.









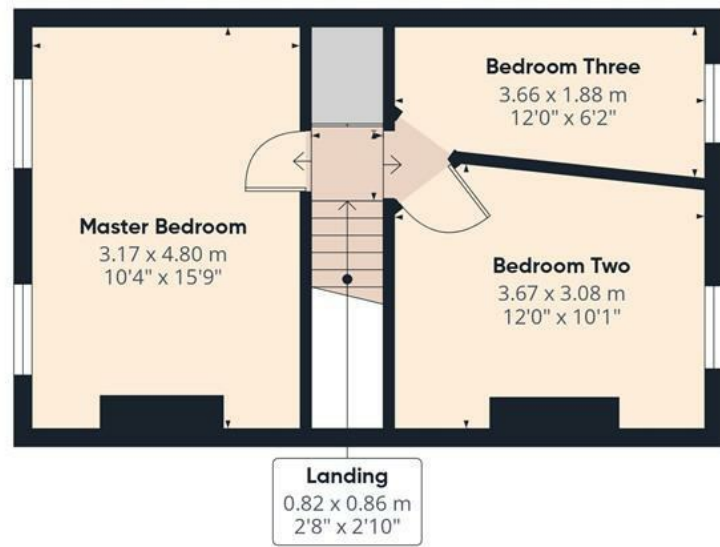


Floor 0

Approximate total area⁽¹⁾

85.1 m²

919 ft²



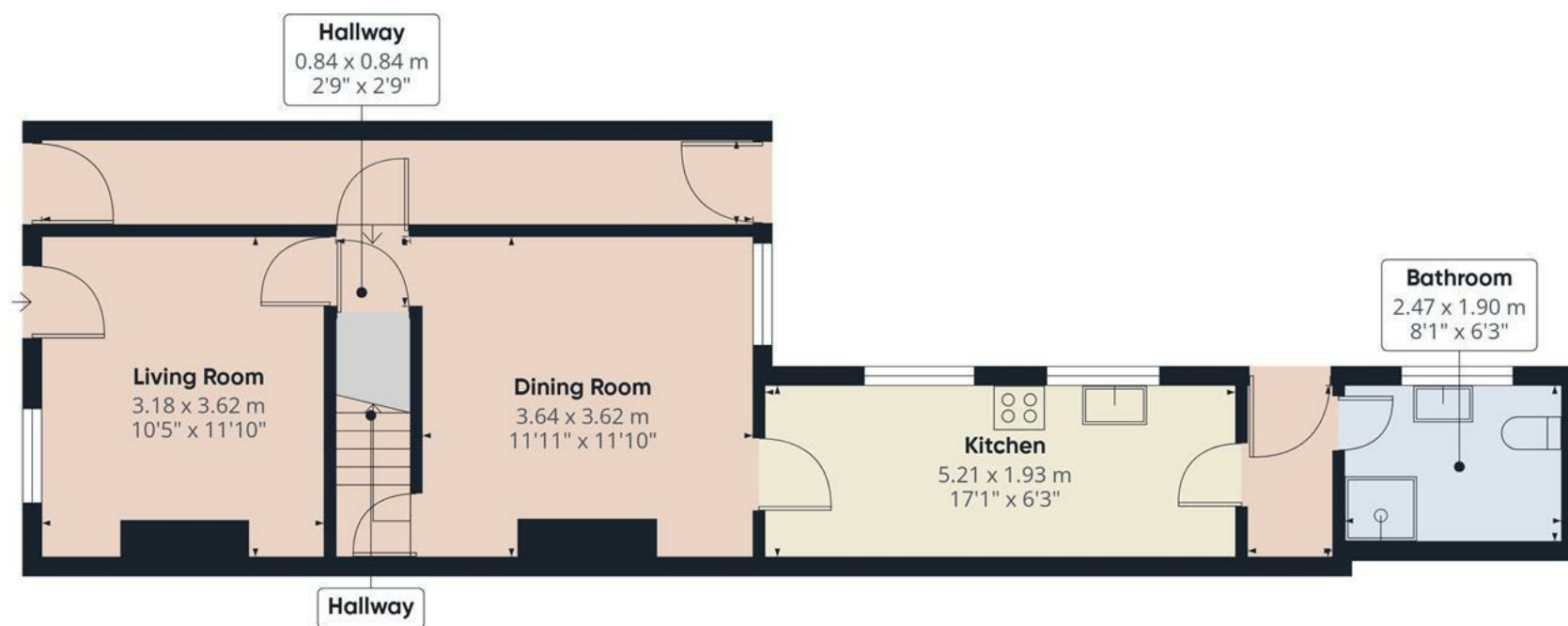
Floor 1



(1) Excluding balconies and terraces

Calculations reference the RICS IPMS 3C standard. Measurements are approximate and not to scale. This floor plan is intended for illustration only.

GIRAFFE360



Approximate total area⁽¹⁾

51.7 m²
559 ft²

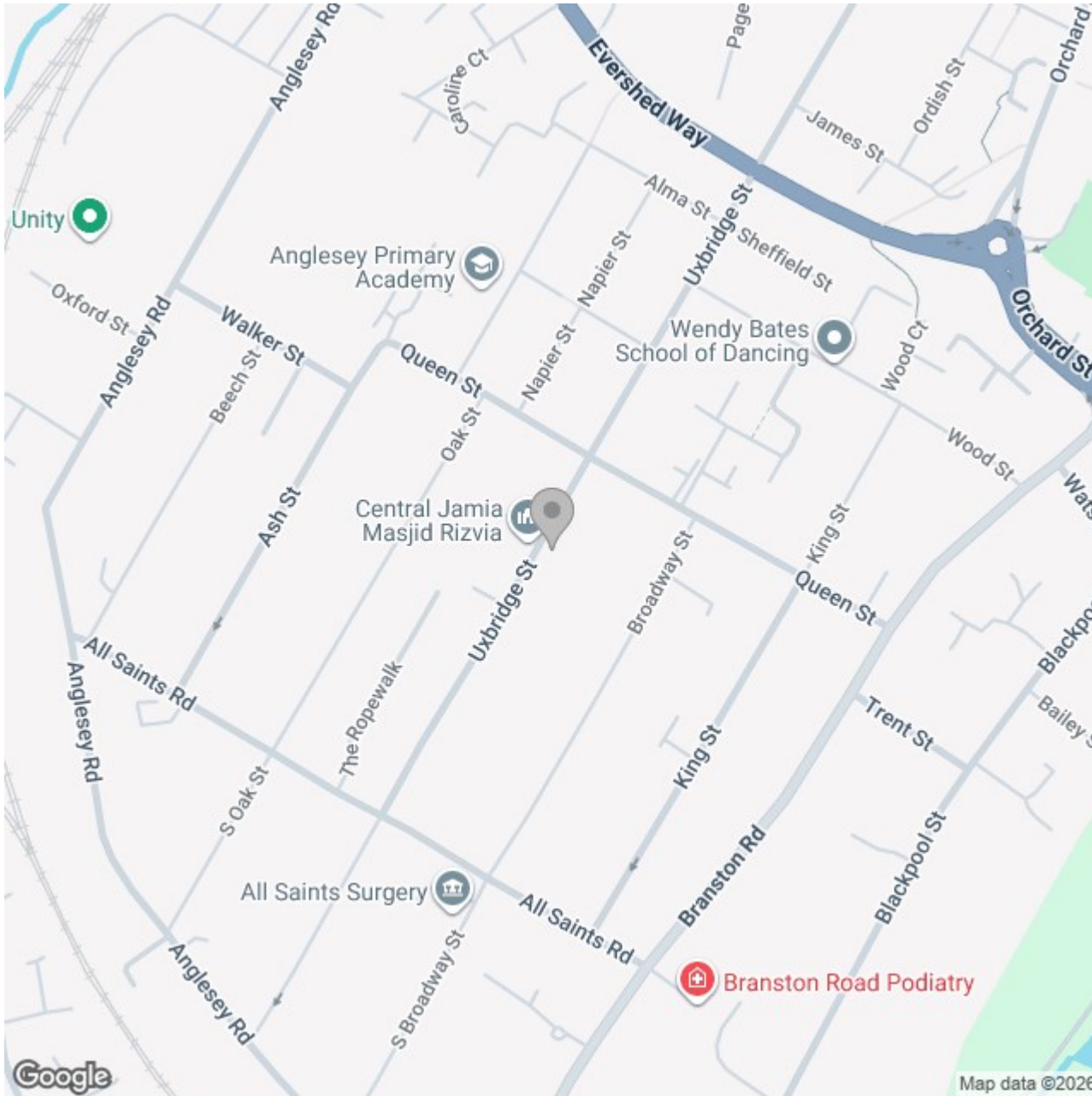
(1) Excluding balconies and terraces

Calculations reference the RICS IPMS 3C standard. Measurements are approximate and not to scale. This floor plan is intended for illustration only.

GIRAFFE360



Floor 0



Energy Efficiency Rating		
	Current	Potential
Very energy efficient - lower running costs		
(92 plus) A		
(81-91) B		
(69-80) C		
(55-68) D		
(39-54) E		
(21-38) F		
(1-20) G		
Not energy efficient - higher running costs		
England & Wales	EU Directive 2002/91/EC 